



quando contano i contenuti.



Warm Water
Catalogue



INNOVATIVE SOLUTIONS, FULL OF VALUE

- We began in the Seventies with tanks.
- Our desire for growth has led us towards new developments and fields.
- Two production centres, Abruzzo (our headquarters) and Sardinia.
- An operations area of roughly 40,000 square meters.
- UNI EN ISO 9001 Certification.
- IMQ Certification.
- SVGW SSIGE Certification.

OUR OBJECTIVES

- Advanced technology, progressive materials.
- TML responds to clients' needs and provides personalised solutions
- Close to the customer, both before and after purchase.

THE PRODUCTION PROCESS

When creating the production structure, TML focused on certain elements which, over time, have contributed to their competitive advantage:

- technologically innovative systems;
- completely automatic processes;
- separating the processing of various raw materials, including the creation of a department for processing carbon steel products, with four production lines, as well as one for processing stainless steel materials. The latter has a completely renovated line, located in a new facility created just for this purpose, which was completed with a modern pickling system and a total immersion passivation system for the finished products.



COMBINED THERMAL STORAGE: KOMBIGLASS/KOMBINOX – SOLINOX	4
COMBINED THERMAL STORAGE: MAXIWARM - SOLARMAX	5
COMBINED THERMAL STORAGE: ACQUAMAX – ACQUASTAR	6
PUFFERSPEICHER – WATERHEATER WITH FIXED PIPE COIL AND SOLAR CONTROL PANEL	7
STAINLESS STEEL WATERHEATER WITH FIXED PIPE COIL – ENAMELLED WATERHEATER WITH FIXED PIPE COIL	8
STAINLESS STEEL AND ENAMELLED WATERHEATER FOR HEAT PUMP – ENERGY HEAT-PUMP: NRW-ECO	9
COMBINED THERMAL STORAGE: MODULMAX – FRIWA-SMART	10
WATERHEATER WITH PLATE-HEAT EXCHANGER – INSPECTIONABLE PLATE HEAT-EXCHANGER	11
ELECTRIC STAINLESS STEEL AND ENAMELLED STORAGE TANK – STORAGE TANK - KERAMTECH	12
WATERHEATER WITH U-TUBE HEAT EXCHANGER (REMOVABLE) – KERAMTECH WATERHEATER WITH U-TUBE HEAT EXCHANGER (REMOVABLE)	13
OTHERS PRODUCTS – CUSTOM ITEMS	15



COMBINED THERMAL STORAGE: KOMBIGLASS - KOMBINOX



Application:

Storage/puffer tank for heating water with production of domestic-water (tank in tank system).

Material of domestic hot water tank:

- > Stainless steel AISI 316T
Processing inside / outside: *pickling and passivation*
Working pressure / temp. tank: 10 bar / 95°C
- > Black steel of high quality (S 235JR) enamelled
Inside treatment: *enamelling according to DIN 4753.3*
Working pressure / temp. tank: 10 bar / 95°C

Puffer Material:

- > Black steel of high quality (S 235JR)
Inside treatment: *no treatment*
Outside treatment: *rust proof and varnish-coat*
Working pressure / temp. tank: 3 bar / 95°C
Working pressure / temp. heat-exchanger: 12 bar / 95°C

Capacity:

650 – 2000 Lt.

Guarantee:

5 years

Version:

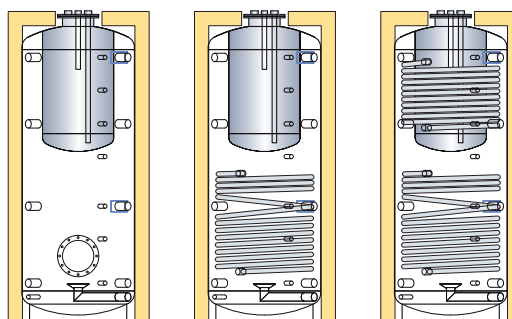
With flange or with 1 or 2 pipe coils

Insulation:

Hard polyur. or soft polyur. - Sky jacket

Cathodic prot.:

Magnesium anode



COMBINED THERMAL STORAGE: SOLINOX

NEW
PRODUCT
2011



Application:

Storage/puffer tank for heating water with production of domestic-water (tank in tank system). The domestic hot water tank is equipped with lower pre-heating exchanger made of corrugated pipe with a high specific surface.

Material of domestic hot water tank:

- > Stainless steel AISI 316T
Processing inside / outside: *pickling and passivation*
Working pressure / temp. tank: 6 bar / 95°C

Puffer Material:

- > Black steel of high quality (S 235JR)
Inside treatment: *no treatment*
Outside treatment: *rust proof and varnish-coat*
Working pressure / temp. tank: 3 bar / 95°C
Working pressure / temp. heat-exchanger: 12 bar / 95°C

Capacity:

650 – 2000 Lt.

Guarantee:

5 years

Version:

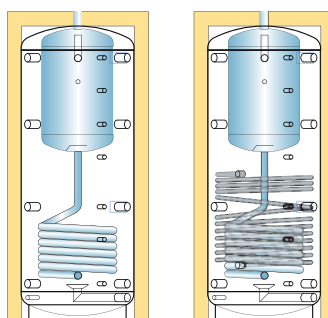
Without or with 1 pipe coil

Insulation:

Hard polyur. or soft polyur. - Sky jacket

Cathodic prot.:

Magnesium anode



Application: Storage/puffer tank for heating water with production of domestic-water by a corrugated stainless steel pipe coil.

Material of dom. water heater:

- > Stainless steel AISI 316 L:
Treatment of pickling and passivation
Working press/ Temp.: 6 bar / 95°C

Puffer material:

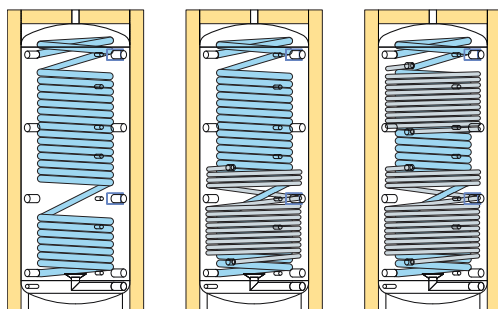
- > Black steel of high quality (S 235JR)
Inside treatment: *no treatment*
Outside treatment: *rust proof and varnish-coat*
Working pressure / temp. ext tank: 3 bar / 95°C
Working pressure / temp. heat-exchanger: 12 bar / 95°C

Capacity: 650-2000 Lt.

Guarantee: 5 years

Version: Without or with 1 or 2 pipe coils

Insulation: Hard polyur. or soft polyur. - Sky jacket



COMBINED THERMAL STORAGE: MAXIWARM



Application: Storage/puffer tank for heating water with production of domestic-water by a corrugated stainless steel pipe coil. The water heater is provided with a primary fluid distribution system that is able to increase performance under the most demanding work conditions.

Material of dom. water heater:

- > Stainless steel AISI 316 L
treatment of pickling and passivation
Working pressure / Temp.: 6 bar / 95°C

Puffer material:

- > Black steel of high quality (S 235JR)
Inside treatment: *no treatment*
Outside treatment: *rust proof and varnish-coat*
Working pressure / temp. tank: 3 bar / 95°C
Working pressure / temp. heat-exchanger: 12 bar / 95°C

Solar exchanger material:

- > Finned copper, ring mounted, in bottom puffer side.
Working pressure / temp. solar-exchanger: 12 bar / 95°C

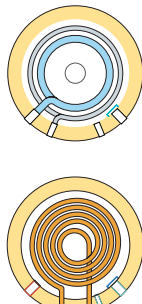
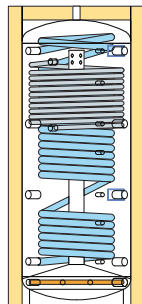
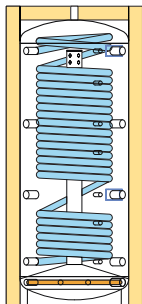
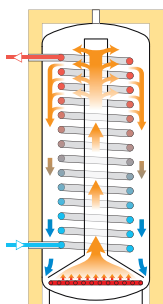
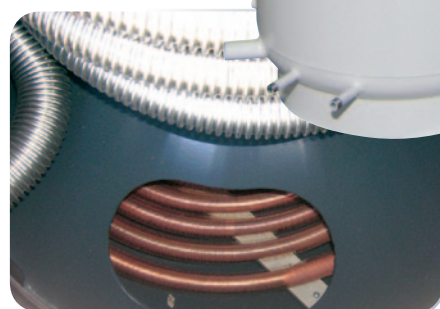
Capacity: 650-2000 Lt.

Guarantee: 5 years

Version: With 1 or 2 exchanger

Insulation: Hard polyur. or soft polyur. - Sky jacket

COMBINED THERMAL STORAGE: SOLARMAX



COMBINED THERMAL STORAGE: ACQUAMAX



Application:

Storage/puffer tank for heating water with production of domestic-water by a removable threefold stainless steel pipe coil.

Material of dom. water heater:

- > Stainless steel AISI 316 L
Treatment of pickling and passivation
Working pressure / Temp.: 6 bar / 95°C

Puffer material:

- > Black steel of high quality (S 235JR)
Inside treatment: *no treatment*
Outside treatment: *rust proof and varnish-coat*
Working pressure / temp. tank: 3 bar / 95°C
Working pressure / temp. heat-exchanger: 12 bar / 95°C

Capacity:

650-2000 Lt.

Guarantee:

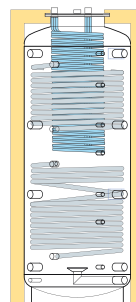
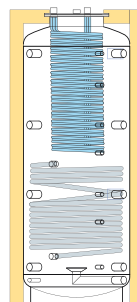
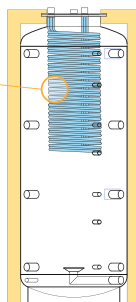
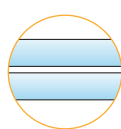
5 years

Version:

Without or with 1 or 2 pipe coils

Insulation:

Hard polyur. or soft polyur. - Sky jacket



COMBINED THERMAL STORAGE: ACQUASTAR

NEW
PRODUCT
2011



Application:

Storage/puffer tank for heating water with production of domestic-water by a removable corrugate stainless steel pipe coil.

Material of dom. water heater:

- > Stainless steel AISI 316 L
Treatment of pickling and passivation
Working pressure / Temp.: 6 bar / 95°C

Puffer material:

- > Black steel of high quality (S 235JR)
Inside treatment: *no treatment*
Outside treatment: *rust proof and varnish-coat*
Working pressure / temp. tank: 3 bar / 95°C
Working pressure / temp. heat-exchanger: 12 bar / 95°C

Capacity:

650-2000 Lt.

Guarantee:

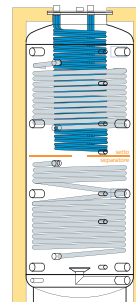
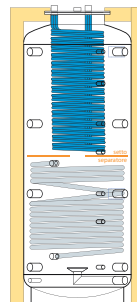
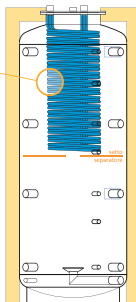
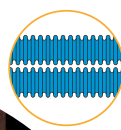
5 years

Version:

Without or with 1 or 2 pipe coils

Insulation:

Hard polyur. or soft polyur. - Sky jacket



Application: Storage/puffer tank for heating water.

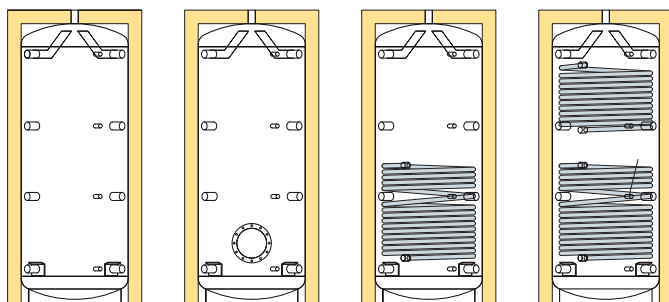
Material: > Black steel of high quality (S 235JR)
 Inside treatment: *no treatment*
 Outside treatment: *rust proof and varnish-coat*
 Working pressure / temp. tank: 4 bar / 95°C
 Working pressure / temp. heat-exchanger: 12 bar / 95°C

Capacity: 300 – 5000 Lt

Version: Without or with 1 or 2 pipe coils or with flange

Guarantee: 3 years

Insulation: Hard polyur. or soft polyur. - Sky jacket



PUFFERSPEICHER



Application: Domestic-waterheating and storage - with fixed pipe coils - Equipment and delivery with Solar-control-panel and direct connenction to Solar-collector.

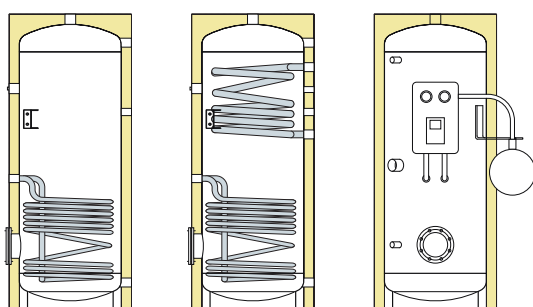
Material: > Stainless steel AISI 316T
 Processing inside / outside: *pickling and passivation*
 Capacity: 200 - 500 Lt.
 Working pressure / temp. tank: 8 bar / 95°C
 Working pressure / temp. pipe coil: 12 bar / 95°
 Guarantee: 5 Years

> Black steel of high quality (S 235JR) enamelled
 Inside treatment: *enamelling according to DIN 4753.3*
 Outside treatment: *rust proof and varnish-coat*
 Capacity: 200 - 500 Lt.
 Working pressure / temp. tank: 8 bar / 95°C
 Working pressure / temp. pipe coil: 12 bar / 95°
 Guarantee: 5 Years

Version: With 1 or 2 pipe coils

Insulation: Hard polyur. foamed - Sky jacket

Cathodic prot.: Magnesium anode



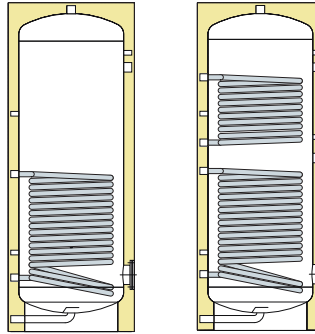
WATERHEATER WITH FIXED PIPE COIL AND SOLAR CONTROL PANEL



STAINLESS STEEL WATERHEATER WITH FIXED PIPE COIL



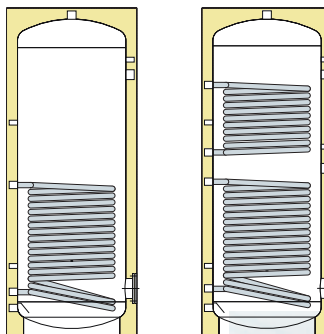
Application:	Domestic-waterheating and storage - with fixed pipe coils.
Material:	> Stainless steel AISI 316T Processing inside / outside: pickling and passivation
Working pressure temp. tank:	6 bar / 95°C
Working pressure temp. pipe coil:	12 bar / 95°
Capacity:	200 - 3000 Lt
Version:	with 1 or 2 pipe coils
Guarantee:	5 Years
Insulation:	Hard polyur. or soft polyur. - Sky jacket
Cathodic prot.:	Magnesium anode



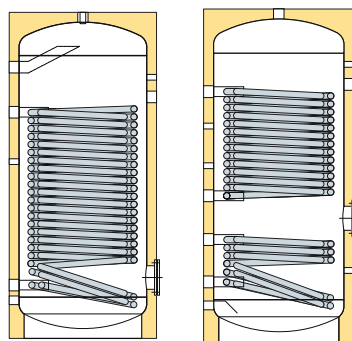
ENAMELLED WATERHEATER WITH FIXED PIPE COIL



Application:	Domestic-waterheating and storage - with fixed pipe coils.
Material:	> Black steel of high quality (S 235JR) enamelled Inside treatment: enamelling according to DIN 4753.3 Outside treatment: rust proof and varnish-coat
Working pressure temp. tank:	8 bar / 95°C
Working pressure temp. pipe coil:	12 bar / 95°
Capacity:	200 - 2000 Lt
Version:	With 1 or 2 pipe coils
Guarantee:	5 Years
Insulation:	Hard polyur. or soft polyur. - Sky jacket
Cathodic prot.:	Magnesium anode



- Application:** Domestic-waterheating and storage - with fixed large area pipe coils - Studied for heat pump.
- Material:**
- > Stainless steel AISI 316T
Processing inside / outside: *pickling and passivation*
 - > Black steel of high quality (S 235JR) enamelled
Inside treatment: *enamelling according to DIN 4753.3*
Outside treatment: *rust proof and varnish-coat*
- Capacity:** 300 - 1000 Lt.
- Guarantee:** 5 Years
- Insulation:** Hard polyur. or soft polyur. - Sky jacket
- Cathodic prot.:** Magnesium anode



STAINLESS STEEL AND ENAMELLED WATERHEATER FOR HEAT PUMP



- Application:** Domestic-waterheating and storage produced by air-water heat pump installed above the tank. The system is designed to absorb free heat of the environment in which it is installed uses it to produce domestic hot water. The heat pump is designed to work with pipes to canalize the air on both the intake and discharge. Electronic control unit can manage the operation of the electrical resistance, the anti-legionella periodic cycle, and possible integration with solar panels.

- Material:**
- > Stainless steel AISI 316T
Processing inside / outside: *pickling and passivation*
 - > Black steel of high quality (S 235JR) enamelled
Inside treatment: *enamelling according to DIN 4753.3*
Outside treatment: *rust proof and varnish-coat*

Thermal power: 1,73 Kw
Efficiency: COP > 3

Minimum operating Temperature: - 4°C

Maximum temperature domestic water: 60° C

Working pressure temp. tank: 6 bar / 95°C

Working pressure temp. pipe coil: 12 bar / 95°C

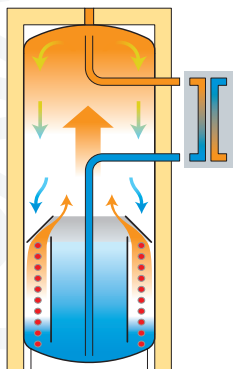
- Capacity:** 250 - 300 Lt
- Version:** without or 1 pipe coil
- Guarantee:** 5 Years
- Insulation:** Hard polyurethane - Sky jacket
- Cathodic prot.:** Magnesium anode

ENERGY HEAT-PUMP: NRW-ECO



**NEW
PRODUCT
2011**

COMBINED THERMAL STORAGE: MODULMAX



Application:

Storage/puffer tank for heating water with production of domestic-water using a thermal module with a plate exchanger, pumping unit, and modulating electronic central unit.

Material of dom. water heater:

- > Stainless steel AISI 316 L
Working pressure / Temp.: 6 bar / 95°C

Puffer material:

- > Black steel of high quality (S 235JR)
Inside treatment: *no treatment*
Outside treatment: *rust proof and varnish-coat*
Working pressure / temp. tank: 3 bar / 95°C
Working pressure / temp. heat-exchanger: 12 bar / 95°C

Capacity:

1000 – 2000 Lt

Version:

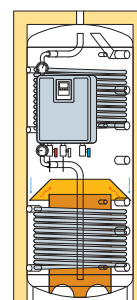
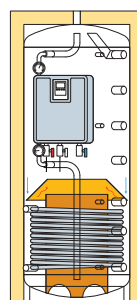
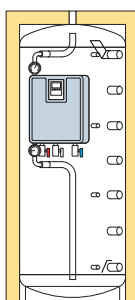
without or with 1 or 2 pipe coils

Guarantee:

5 years

Insulation:

Hard polyur. or soft polyur. - Sky jacket



COMBINED THERMAL STORAGE: FRIWA-SMART



Application:

Storage/puffer tank for heating water with production of domestic-water using a thermal module with a plate exchanger, pumping unit, and thermostatic adjustment.

Material of dom. water heater:

- > Stainless steel AISI 316 L
Working pressure / Temp.: 6 bar / 95°C

Puffer material:

- > Black steel of high quality (S 235JR)
Inside treatment: *no treatment*
Outside treatment: *rust proof and varnish-coat*
Working pressure / temp. tank: 3 bar / 95°C
Working pressure / temp. heat-exchanger: 12 bar / 95°C

Capacity:

300 – 800 Lt

Version:

without or with 1 or 2 pipe coils

Guarantee:

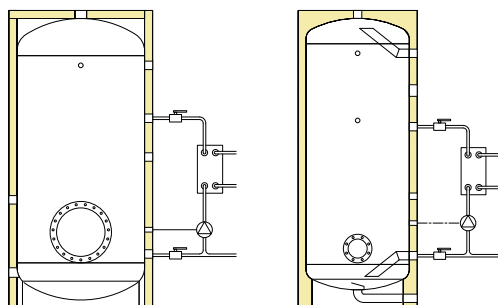
5 years

Insulation:

Hard polyur. or soft polyur. - Sky jacket



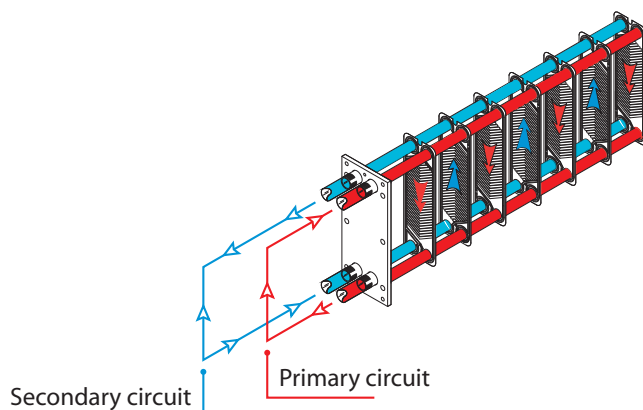
- Application:** Production and storage domestic-water by plate-heat exchanger.
- Material:**
- > Stainless steel AISI 316T
Processing inside / outside: *pickling and passivation*
Working pressure / temp. tank: 6 bar / 95°C
 - > Black steel of high quality (S 235JR) enamelled
Inside treatment: *enamelling according to DIN 4753.3*
Working pressure / temp. tank: 8 bar / 95°C
- Heat Exchanger.:** Plate heat exchange hard soldered or disassembling, circulation pump for domestic water, pipe connections.
- Pressure / temp.:**
- > 30 bar / 195 °C (Kit with hard soldered plate exch.)
 - > 16 bar / 130 °C (Kit with disassembling plate exch.)
- Capacity:** 200 - 2000 Lt
- Guarantee:** 5 Years
- Insulation:** Hard polyur. or soft polyur. - Sky jacket
- Cathodic prot.:** Magnesium anode



WATERHEATER WITH PLATE-HEAT EXCHANGER



- Application:** Plate heat exchanger inspection, sheets of stainless steel AISI 316 L, with interposed seals (NBR or EPDM), connections on stainless steel outer structure in painted carbon steel, galvanized bolts tightening.
- Material:**
- > Stainless steel AISI 316L
- Working pressure/temp.**
- 16 bar / 130°C (NBR)
16 bar / 150°C (EPDM)
- Guarantee:** 5 Years



INSPECTIONABLE PLATE HEAT-EXCHANGER



ELECTRIC STAINLESS STEEL AND ENAMELLED STORAGE TANK



Application:

Storage for domestic water with flange for electric resistance.

Material:

- > Stainless steel AISI 316T
Processing inside / outside: *pickling and passivation*
Working pressure / temp. tank: 6 bar / 95°C
- > Black steel of high quality (S 235JR) enamelled
Inside treatment: *enamelling according to DIN 4753.3*
Working pressure / temp. tank: 8 bar / 95°C

Capacity:

200 - 2000 Lt

Guarantee:

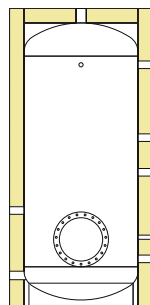
5 Years

Insulation:

Hard polyur. or soft polyur. - Sky jacket

Cathodic prot.:

Magnesium anode



STORAGE TANK - KERAMTECH

Application:

Storage for domestic-water.

Material:

- > Black steel of high quality (S 235JR) Keramtech
Inside treatment: *Keramtech lining according to D.M. 174/04*
Outside treatment: *rust proof and varnish-coat*

Working pressure

temp. tank:

6 bar / 100°C

Capacity:

1500 - 10000 Lt

Guarantee:

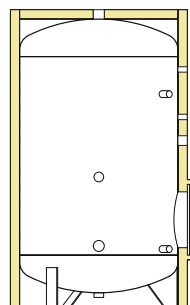
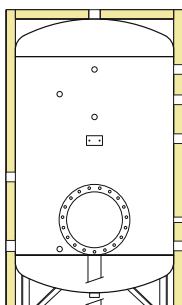
3 Years

Isolation:

Soft polyur. - Sky jacket

Cathodic prot.:

Magnesium-Anode



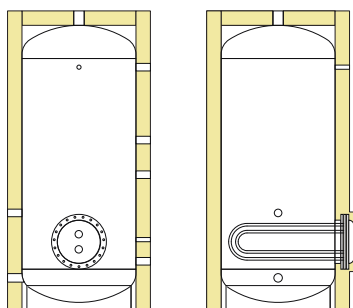
Application: Domestic-waterheating and storage equipped with 1 or 2 U-tube heat-exchanger made of Copper or Stainless steel.

Material:

- > Black steel of high quality (S 235JR) enamelled
 Inside treatment: *enamelling according to DIN 4753.3*
 Outside treatment: *rust proof and varnish-coat*
 Working pressure temp. tank: 8 bar / 95°C
 Capacity: 200 - 2000 Lt
- > Stainless steel AISI 316T
 Processing inside / outside: *pickling and passivation*
 Working pressure / temp. tank: 6 bar / 95°C
 Capacity: 200 - 5000 Lt

Guarantee: 5 Years
Working pressure
temp. heat-exchanger: 12 bar / 95°C

Insulation: Hard polyur. or soft polyur. - Sky jacket
Cathodic prot.: Magnesium anode



WATERHEATER WITH U-TUBE HEAT EXCHANGER (REMOVABLE)



KERAMTECH WATERHEATER WITH U-TUBE HEAT EXCHANGER (REMOVABLE)

Application: Domestic-waterheating and storage equipped with 1 or 2 U-tube heat-exchanger made of Copper or Stainless steel.

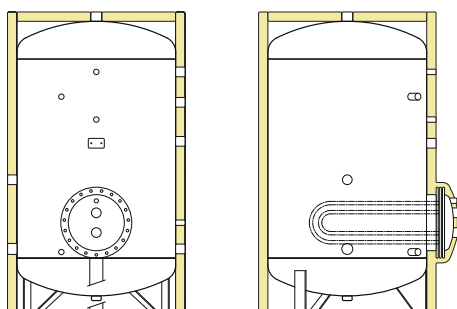
Material:

- > Black steel of high quality (S 235JR) Keramtech
 Inside treatment: *Keramtech lining according to D.M. 174/04*
 Outside treatment: *rust proof and varnish-coat*

Working pressure
temp. tank: 6 bar / 100°C

Working pressure
temp. heat-exchanger: 12bar / 95°C

Capacity: 1500 - 10000 Lt
Guarantee: 3 Years
Insulation: Hard polyur. or soft polyur. - Sky jacket
Cathodic prot.: Magnesium anode



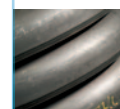


Sonderspeicher Lt 100.000 / 8 bar



T.M.L. *also produces:*

- Teflon-coated and galvanized storage tanks and water heaters
- Hanging water heaters double wall
- Hot water tanks for pumped and non-pumped solar panels
- Hot water tanks for vacuum solar panels
- Storage tanks for chilled water
- Stainless steel, galvanized and polyethylene storage tanks for cold water
- Storage tanks for cold water under pressure (SC)
- PED inspected galvanized autoclaves
- Underground or external tanks for diesel oil
- Double-walled underground diesel oil tanks
- Tanks for general fuel storage
- Approved fixed diesel fuel distribution tanks
- Approved moveable diesel fuel distribution tanks
- Diesel fuel tanks for generator systems
- Thermofireplaces
- Wood and pellet boilers
- Biomass boilers



Custom *Items*

> FOR T.M.L., SATISFYING EACH AND EVERY CLIENT'S REQUEST IS FUNDAMENTAL.

Over thirty years of experience and the most modern construction ideas have allowed us to create a **"special production"** department that is able to complete any design request or specific need. The combination of our notably flexible and highly professional structure, the availability of technical know-how, and a department provided with the most up-to-date technology turns our clients' ideas into reality. The technical office is an important part of the company -- in addition to assisting clients, it is dedicated to researching innovative solutions, advancing existing products, and studying the feasibility of prototypes.

T.M.L. IS THE RIGHT PARTNER FOR ALL YOUR NEEDS.



quando contano i contenuti.



T.M.L. srl

Headquarters factory:

fraz. Favale · 64010 Civitella del Tronto (TE)

tel +39 (0)861 927003 · fax +39 (0)861 927024

Branch factory:

zona artigianale Loc. Pardu Prenu · 09071 Abbasanta (OR)

tel +39 (0)785 52669 · fax +39 (0)785 53658